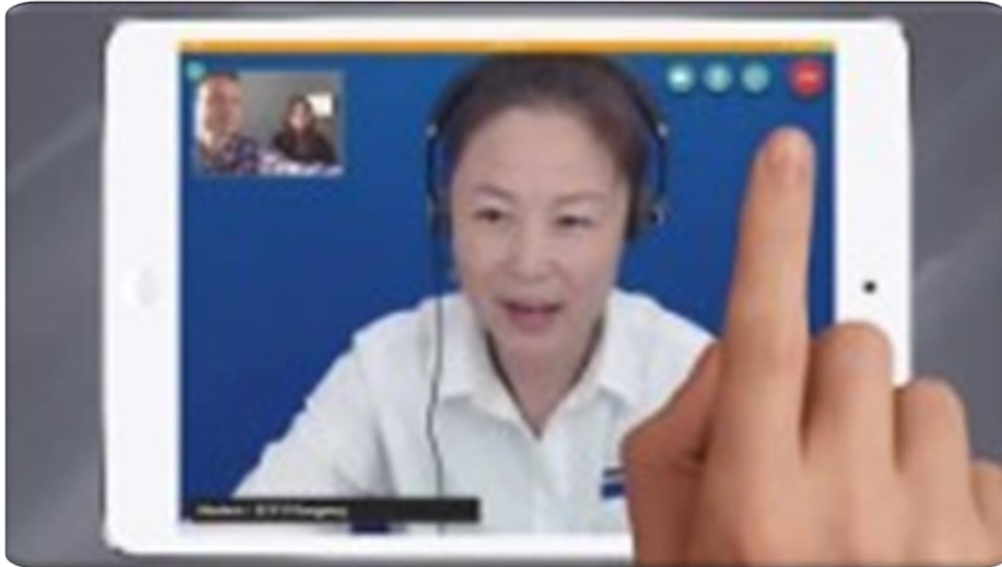




April 11,  
2023

# Voting Accessibility Advisory Committee Meeting

# Multilingual Virtual Poll Workers (MVP)

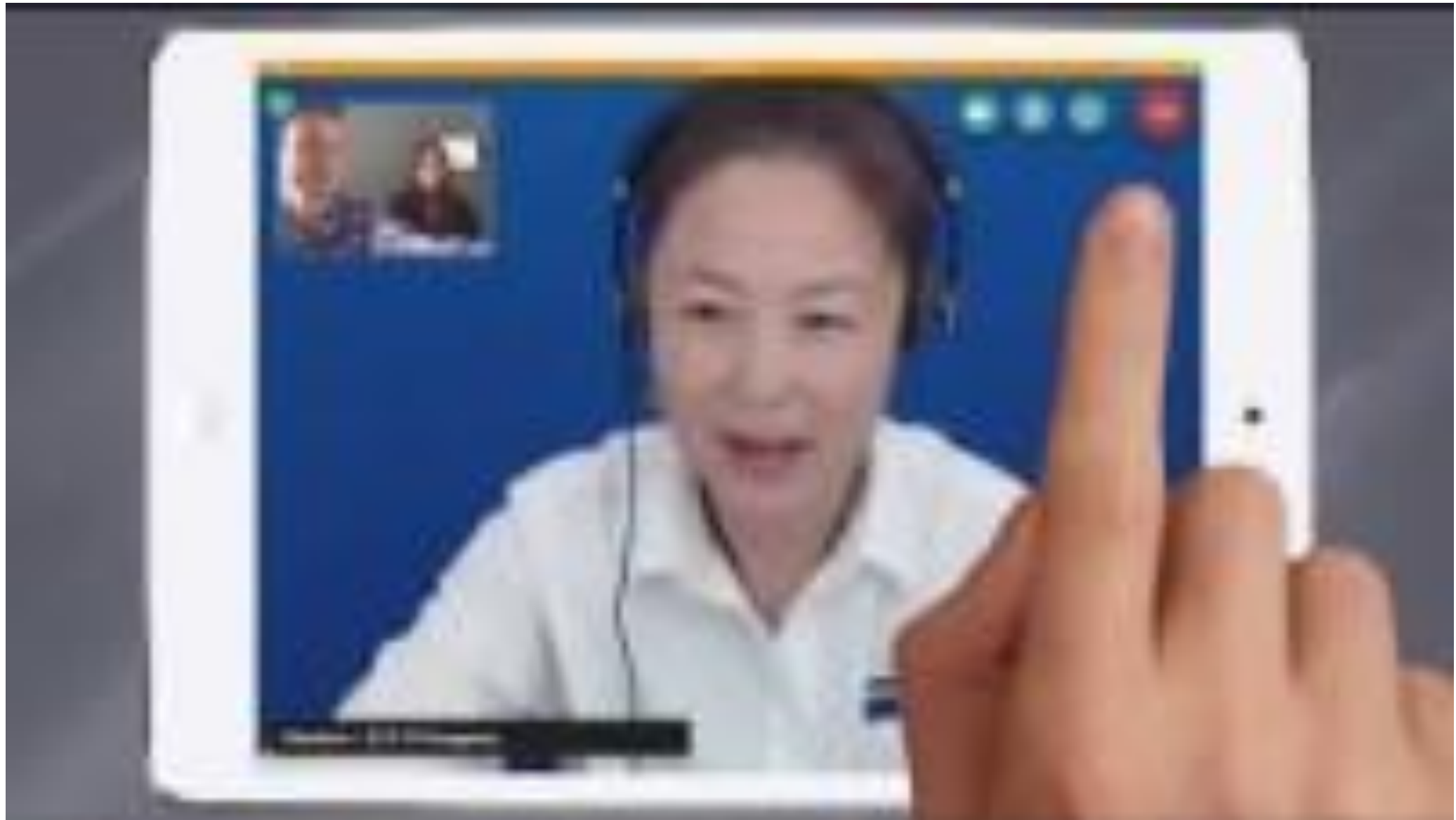


Merced County started using the MVPs to help with our elections in 2019.

Merced County Registrar of Voters Office-  
2019 Clearinghouse Award

Winner: During the 2019 elections, Merced County utilized their new Multilingual Virtual Poll Worker Program (MVP) to assist voters who are deaf by providing a direct iPad-based connection to American Sign Language interpreters. The MVP may also be used to provide interpreters for dozens of languages.

# Multilingual Virtual Poll Workers (MVP)



## Exterior Approach And Entrance

Route from closet public transportation to front door

- Parking and Drop-off Zones
- Circulation Path
- Ramps and Curb Ramps
- Entrances

## Interior Approach and Circulation

Route within one floor level	Route between floor levels
<ul style="list-style-type: none"><li>• Doors and Hallways</li><li>• Voting Area</li><li>• Signage</li></ul>	<ul style="list-style-type: none"><li>• Steps</li><li>• Elevators</li><li>• Lifts</li></ul>

Interior Spaces	Optional Restrooms
Signage for Programs and Services	Restroom Stalls and Lavatories

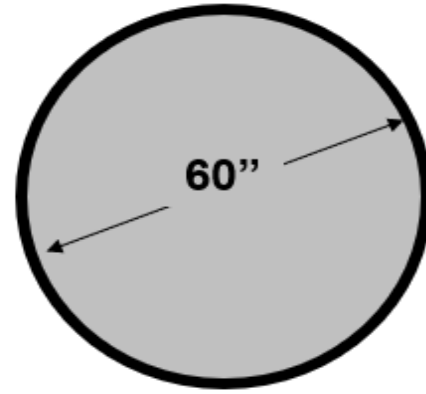
American with Disabilities Act  
(ADA) Surveys:

# Physical Access Elements

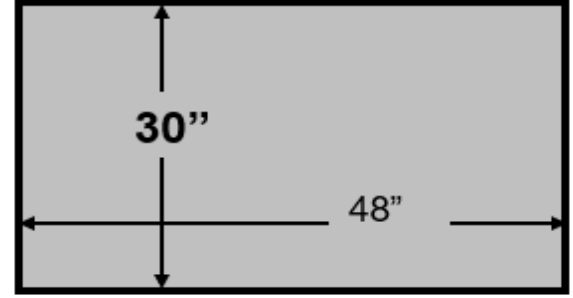
American with Disabilities Act (ADA)  
Surveys:

# Clear Space Minimum Requirements

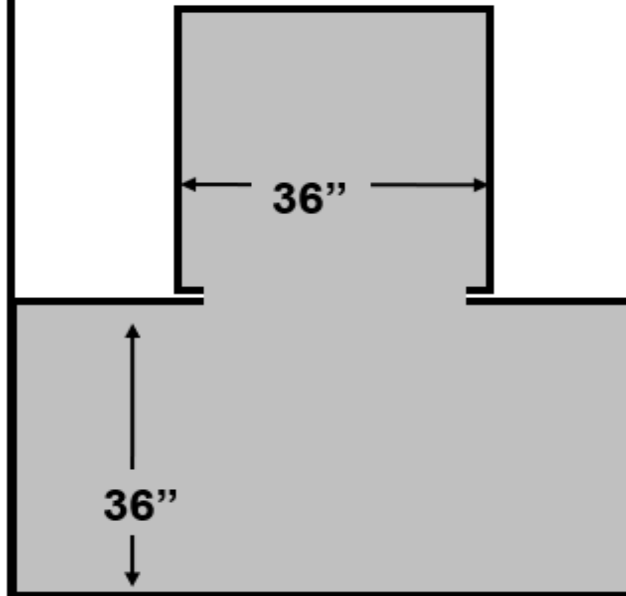
**360° Turn Clearance**



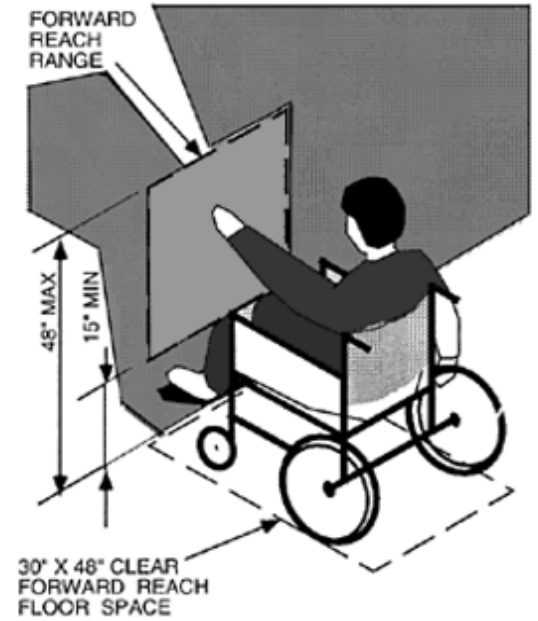
**30"x 48" Clear Space**



**180° T-Turn Clearance**



**Forward Reach Range**



# Ballot Drop Boxes

Current Drop Boxes: 11

City of Atwater  
(located in the lobby)

City of Gustine  
(located in the lobby)

City of Los Banos  
(located in the lobby)

Liberty Market  
(Delhi, located at the entrance of the store)

City of Dos Palos  
(located in the lobby)

City of Livingston  
(located in the lobby)

City of Merced  
(located in the lobby)

Rancho San Miguel  
(Merced: located at the entrance of the store)

Raley's (Merced,  
located at the entrance of the store)

UC Merced (located in the ASUCM Student Govt building)

Merced County Elections Warehouse  
(Election Day Only)



# Curbside Voting

## Current Process for Curbside Voting

- Taking the Poll Pad out to their car to verify their information and to have them sign by their name
- Then go back to retrieve their ballot and secrecy sleeve.
- Give the Voter their ballot and voting instructions and then wait by their car for them to finish voting.
- Take their ballot for them and insert it into the DS200. Then take the Voter their “I Voted” sticker.

## Future Process

- We are looking to add in a QR code located at our designated curbside voting spot at each Voting Assistance Center that can be scanned to let the poll workers know that a curbside voter is outside.
- And/or putting a phone number to call to alert the poll workers that there is a curbside voter outside.



Questions?



# Contact Us



2222 M Street

Merced, CA 95340

(209) 385-7541

[elections@countyofmerced.com](mailto:elections@countyofmerced.com)

Follow us on Social Media @MercedCountyROV

